



# Lubbins Park Primary

**Be Ready ~ Be Respectful ~ Be Safe**



www.lubbinspark.essex.sch.uk

Telephone: 01268 697181 | Email: admin@lubbinspark.essex.sch.uk **Healthy School**

## Newsletter

Term: Autumn Date: Friday 3rd February

### Message from Mrs Travi

And just like that January is over!

Despite the day on Wednesday being a bit different, overall the children were impeccably behaved, with lots of them saying they really enjoyed the day with senior leaders teaching. This was hugely due to the visit from author Steve Clifford and his writing workshops that he delivered to every class across Wednesday and Thursday.

I was able to give out so many respect badges and now I am getting closer to my target of 100 badges by Easter.

Next week, we are raising awareness of **Mental Health Week**, with the children completing some tasks from their **Personal Passports** as well as a **Walk and Talk 1 Mile Event** on Wednesday for the whole school. If the children wish to wear their black trainers on this day, they are more than welcome to do so.

On Friday, we have our KS2 Spelling Bee with the finalists competing against each other in the hall—stay tuned for the winner to be announced!

Please can I ask that all communication goes through the office so that it can be recorded and responded to in the correct way.

We have some great news, Emma Roberts, our Admin Assistant, has now been promoted to Office Manager at Lubbins Park. We are very lucky to have such a fantastic team in the office with Mrs Roberts and Mrs Brandon.

Have a great weekend!

### *Be Ready*

#### Author Steve Clifford Visit

We had a very special visitor at Lubbins Park on Wednesday and Thursday this week, book author Steve Clifford came into school and carried out workshops with both KS1 and KS2 as well as them all taking part in a writing challenge.

All the children thoroughly enjoyed their sessions with Steve.



### *Be Respectful*

#### DoJo Winners

A HUGE well done to our DoJo winners this week! Here they are with their biscuits!





The following pupils have received the most points in their class this week for Compassion, Independence, Team Work, Perseverance and WOW! Moments.

<b>Reception -</b>	<b>Kai</b>
<b>1ED -</b>	<b>Lily M</b>
<b>2IC -</b>	<b>Emmy</b>
<b>3BJ -</b>	<b>Olly</b>
<b>4MH -</b>	<b>Rhegan</b>
<b>5JR -</b>	<b>Alfie</b>
<b>6JC -</b>	<b>Lily</b>

## Deanes Holiday Camp



Activity List			
Pick one activity per day			
Monday 13th February	Multi Sports (5+)	Slime & Craft Day (5+)	Tennis & Badminton (5+)
Tuesday 14th February	Multi & Glow Sports (5+)	Dance & Craft Day (5+)	Fortnite & Golf Day (5+)
Wednesday 15th February	Multi Sports (5+)	Dodgeball & Basketball (5+)	Marvel, Minecraft & Star Wars (5+)
Thursday 16th February	Multi & Glow Sports (5+)	Cheerleading & Slime (5+)	Inflatable Fun Day (5+)
Friday 17th February	Multi Sports (5+)	Gymnastics (5+)	Legs & Craft Day (5+)

### Dinner Menu

The dinner menu for week commencing 06.02.2023 will be: **Week 3 ORANGE** from the **Autumn/Winter** menu.

School dinners cost £2.30 per child per day and payment should be made via Pay 360 Education Payments.

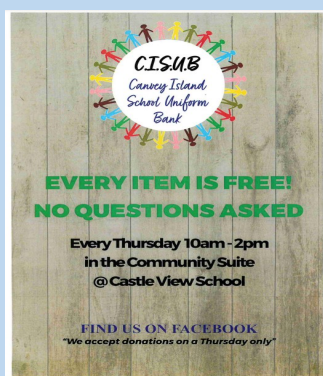
**A reminder that children from Reception to Year 2 are entitled to Free School meals**

### FURTHER INFORMATION

#### Uniform Bank

A reminder of the uniform bank based at Castle View School. Free uniform is available to all with no questions asked.

Opening time: Thursday from 10am to 2pm



#### Family drop In

An opportunity to get confidential advice and support if you have concerns about your child's health. No appointment is necessary - please just pop in.



### What we've been learning this week.....

Each week on our website we will share a snippet of your child's week - checkout the links below:

#### Year Group

#### Link to website

Reception	<a href="https://www.lubbinspark.essex.sch.uk/eyfs-reception-nursery-1/">https://www.lubbinspark.essex.sch.uk/eyfs-reception-nursery-1/</a>
Year 1	<a href="https://www.lubbinspark.essex.sch.uk/year-1-1/">https://www.lubbinspark.essex.sch.uk/year-1-1/</a>
Year 2	<a href="https://www.lubbinspark.essex.sch.uk/year-2-1/">https://www.lubbinspark.essex.sch.uk/year-2-1/</a>
Year 3	<a href="https://www.lubbinspark.essex.sch.uk/year-3-1/">https://www.lubbinspark.essex.sch.uk/year-3-1/</a>
Year 4	<a href="https://www.lubbinspark.essex.sch.uk/year-4-1/">https://www.lubbinspark.essex.sch.uk/year-4-1/</a>
Year 5	<a href="https://www.lubbinspark.essex.sch.uk/year-5-1/">https://www.lubbinspark.essex.sch.uk/year-5-1/</a>
Year 6	<a href="https://www.lubbinspark.essex.sch.uk/year-6-1/">https://www.lubbinspark.essex.sch.uk/year-6-1/</a>

**At Lubbins Park Primary we are committed to safeguarding and promoting the welfare of children, we expect all staff and volunteers to share this commitment.**

**Designated Safeguarding Lead – Mrs J Travi**